

**Stop Overcrowding**

Vote Yes  
on Measure W

**Build Schools**

**Teachers, Parents and  
Community Leaders Agree**

*"Every day, teachers see the problems  
caused by severe overcrowding. That's  
why the Antelope Valley Teachers  
Association strongly supports Measure W."*

**Gene Smith**, President  
Antelope Valley Teachers Association

**For more information visit**  
[www.SupportAntelopeValleyEducation.com](http://www.SupportAntelopeValleyEducation.com)



*"We need more schools! Measure W is the only  
realistic solution to reduce overcrowding in our  
classrooms."*

**Jeri Munney**  
Lancaster High School Parent

*"Measure W will provide the new schools and  
classrooms needed to relieve overcrowding and  
raise educational standards at Antelope Valley  
high schools."*

**Dr. Jackie Fisher**, President  
Antelope Valley College

My school is too crowd  
My school is too crowded  
My school is too crow

**Our Children Need Help!**

Paid for by Support Antelope Valley Education  
YES on Measure W, ID #1298378  
43759 15th Street West, #35  
Lancaster, CA 93534

PRSR STD  
U.S. Postage  
PAID  
WMI

# Crowded Schools Are Jeopardizing Our Children's Education & Safety



Overcrowding has reached severe levels at 5 of our 8 local high schools.

## Severe Overcrowding

- *Quartz Hill High School has over 3,500 students—DOUBLE the number of students it was designed to educate.*
- *Lancaster, Highland, and Palmdale High Schools are EACH overcrowded by 1,000 students or more.*

## Existing Schools Full

- *Local high schools have nearly run out of physical space for portable classrooms.*



*“Unless we build more schools, overcrowding will become so serious that student test scores will decline and college admissions will suffer.”*

**Ira Simonds**  
Retired History Teacher  
and School Board Trustee

## Class Sizes Increasing

- *Educational research shows that students learn more and perform better in smaller classes.*

## More Students At Risk

- *FBI crime statistics have found that severely overcrowded schools cause increased youth crime and gang activity.*

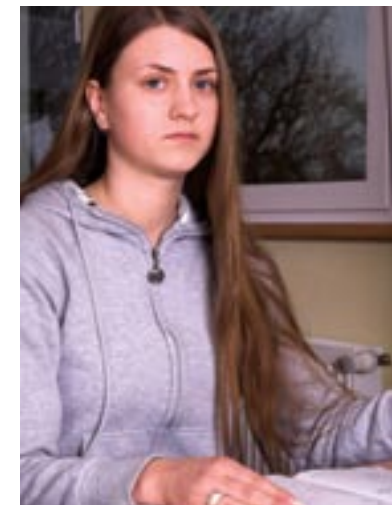
## Traffic Congestion

- *Overcrowding creates long traffic lines near school sites and worsens traffic during the peak morning commute time.*

# Measure W Stops School Overcrowding

**NEW SCHOOLS**—Measure W relieves overcrowding by building two new high schools—one for Palmdale and one for Lancaster.

**SMALLER SCHOOL SIZES**—Measure W helps to reduce school sizes and relieve overcrowded classrooms by expanding classrooms and science labs at our existing high school campuses.



*“There are so many students at school. It’s hard to get the classes I need for college. Measure W is vital to my future and the future of everyone in our Valley.”*

**Palmdale High School Student**

**HIGHER STANDARDS**—Antelope Valley teachers support Measure W because it will improve the academic curriculum and educational facilities at our high schools.

**STATE MATCHING FUNDS**—Measure W will generate \$80 million in state matching funds for local schools. Without Measure W, these matching funds will be lost.



*“Deputy Sheriffs are very concerned about the safety issues posed by school overcrowding. We urge you to vote **YES** on Measure W.”*

**Steve Remige**, President  
Association for Los Angeles Deputy Sheriffs

**\$\$ STAYS LOCAL**—All revenues generated by Measure W will be spent here for local school construction and cannot be taken away by the State.

**TAXPAYER OVERSIGHT**—Measure W creates an Independent Citizens Oversight Committee to monitor expenditures and ensure public accountability.

